

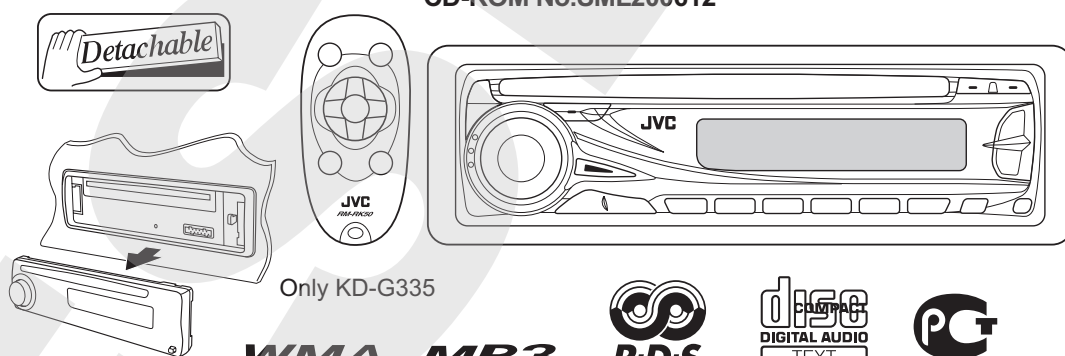
JVC

SCHEMATIC DIAGRAMS

CD RECEIVER

**KD-G331E, KD-G331EX, KD-G331EY
KD-G331EU, KD-G332E, KD-G332EX
KD-G332EY, KD-G332EU, KD-G333E
KD-G333EX, KD-G333EY, KD-G333EU
KD-G334UI, KD-G335U, KD-G335UN
KD-G335UT, KD-G335UH, KD-G337BEE
KD-G337SEE, KD-G338UF**

CD-ROM No.SML200612



Only KD-G335

WMA MP3



(for KD-G331)
(for KD-G332)
(for KD-G333)
(for KD-G337)

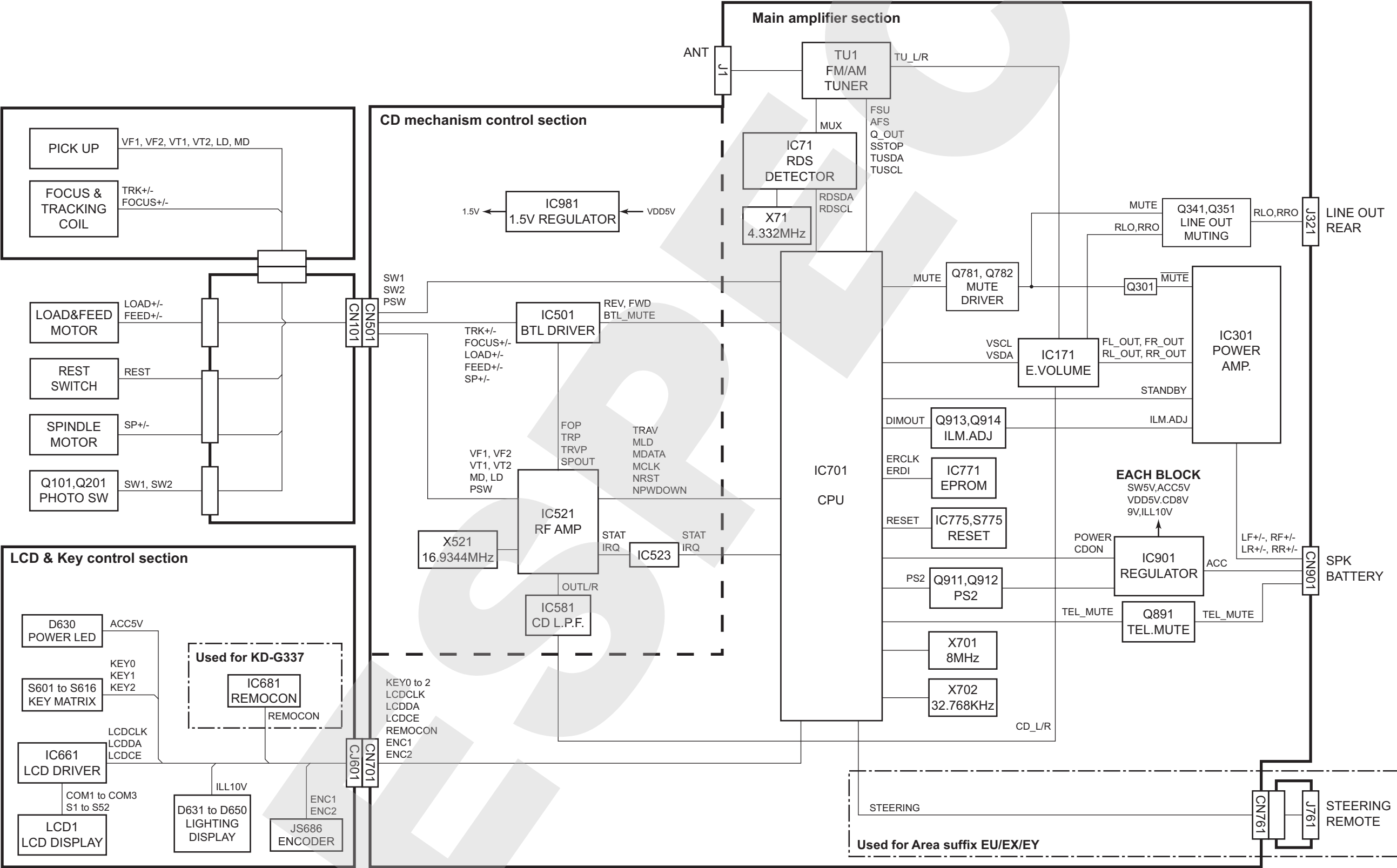


Lead free solder used in the board (material : Sn-Ag-Cu, melting point : 219 Centigrade)

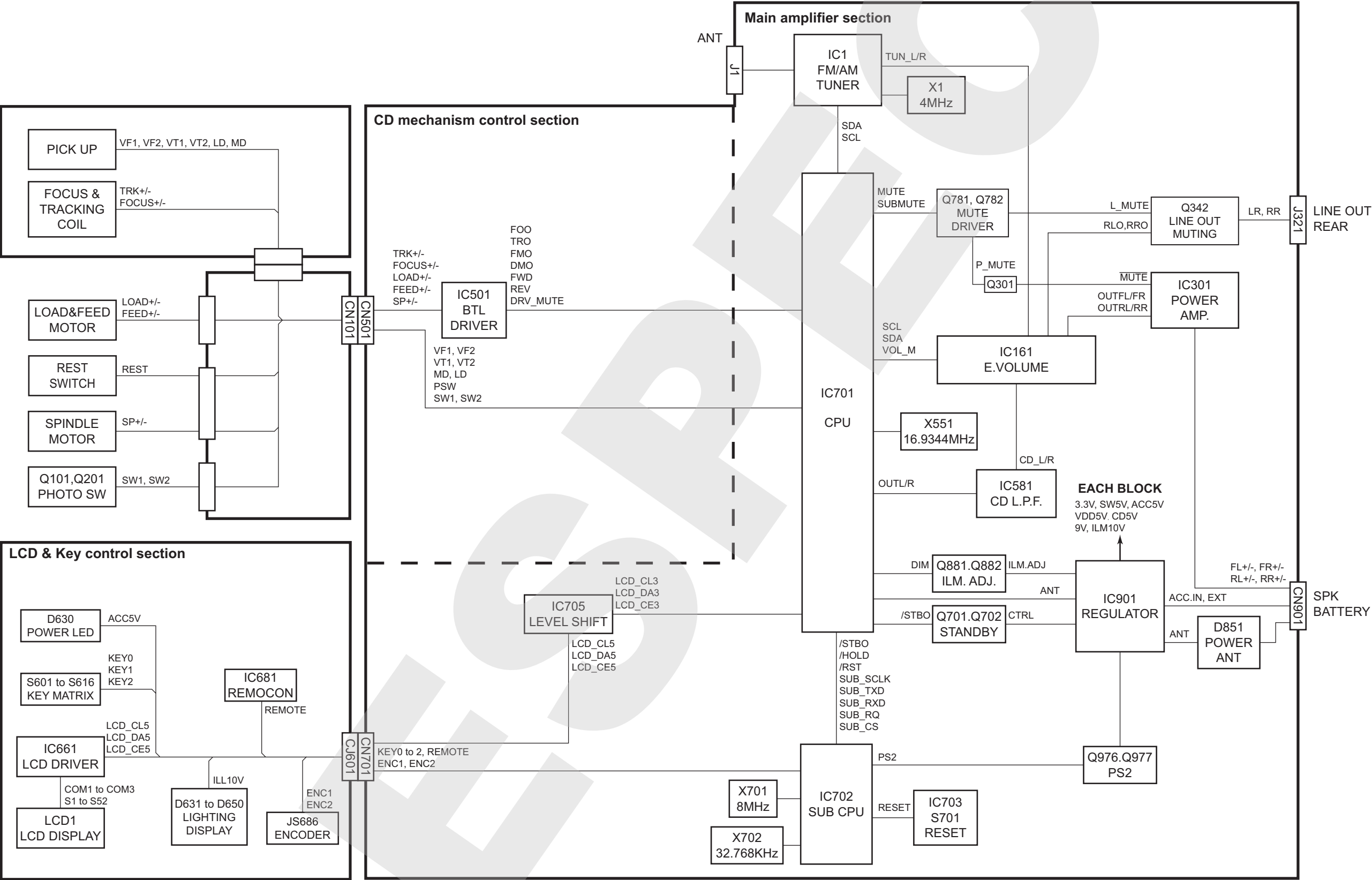
Contents

Block diagram	2-1
Standard schematic diagrams	2-3
Printed circuit boards	2-8

Block diagram (For KD-G331,KD-G332 KD-G333 and KD-G337)

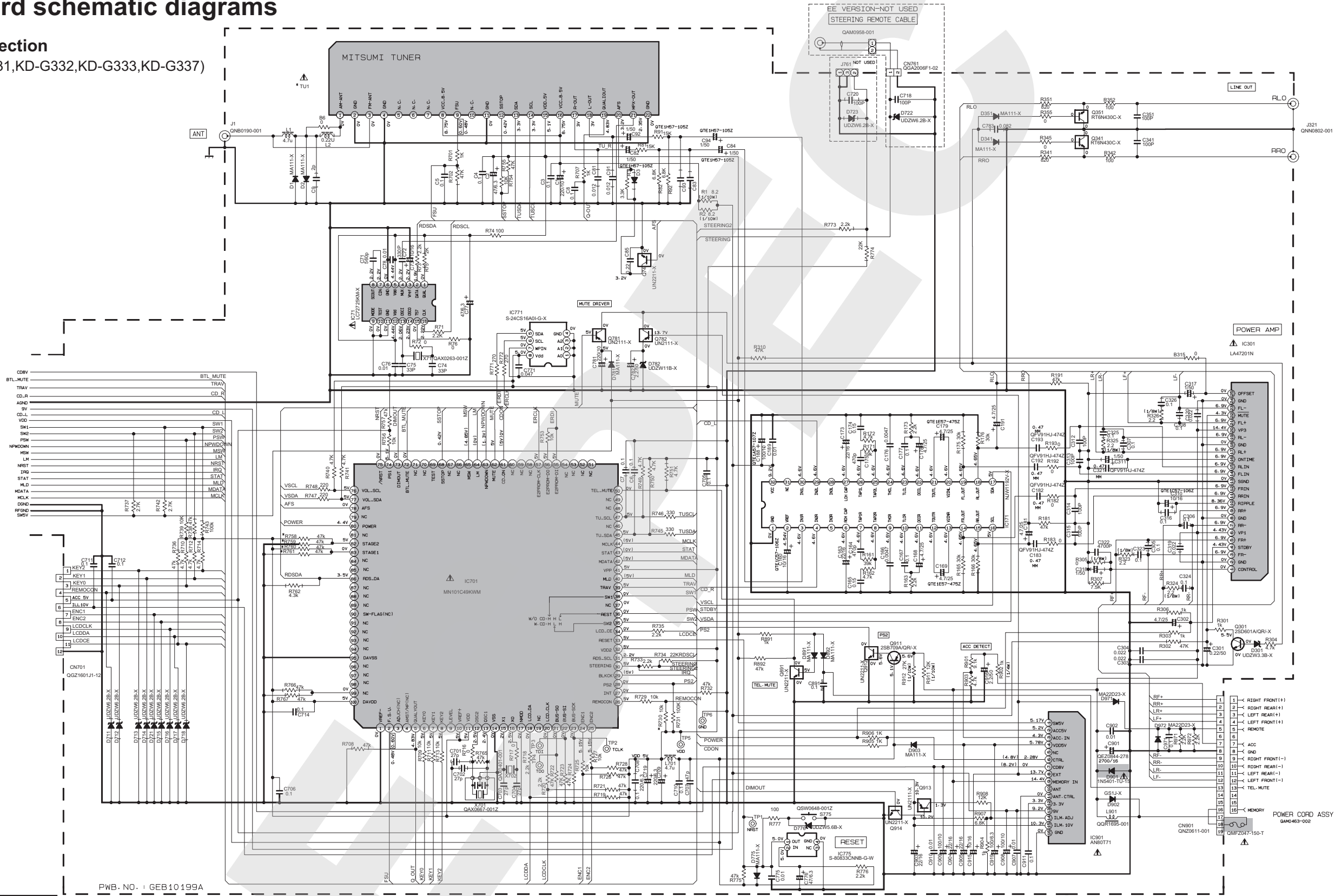


Block diagram (For KD-G334,KD-G335 and KD-G338)



Standard schematic diagrams

■ Main section
(for KD-G331,KD-G332,KD-G333,KD-G337)



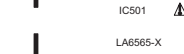
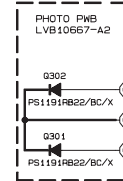
		RT1N141C-X
		RT1P141C-X
		RT6N430C-X

REF. NAME	MODEL	KD-G331ED	KD-G332/3ED	KD-G337BEED	KD-G337SEED
R758		X	X	O	O
R759		O	O	X	X
R760		O	O	X	X
R761		X	X	O	O
TU1	GAU0484-001		GAU0484-001		GAU0484-001
R730		O	O	X	X

- NOTES
- VOLTAGES ARE DC-MEASURED WITH A DIGITAL VOLT METER WITHOUT INPUT SIGNAL CONDITION---FM MODE. () AM MODE. () IC CODE.
 - UNLESS OTHERWISE SPECIFIED.
ALL RESISTORS ARE 1/16W ± 5% METAL GLAZE RESISTOR.
ALL CAPACITORS ARE 50V OR 25V CERAMIC CAPACITOR.
ALL RESISTANCE VALUES ARE IN OHM.
ALL CAPACITANCE VALUES ARE IN uF (P=PF)
ALL E-CAPACITORS ARE SHOWN IN THE FORM OF CAPACITANCE(uF)/RATED VOLTAGE(V)
TF --- T.F. CAPACITOR
 - COMPONENTS IN () INDICATE NOT USE.


Parts are safety assurance parts.
When replacing those parts make
sure to use the specified one.

(for KD-G331,KD-G332,KD-G333,KD-G337)

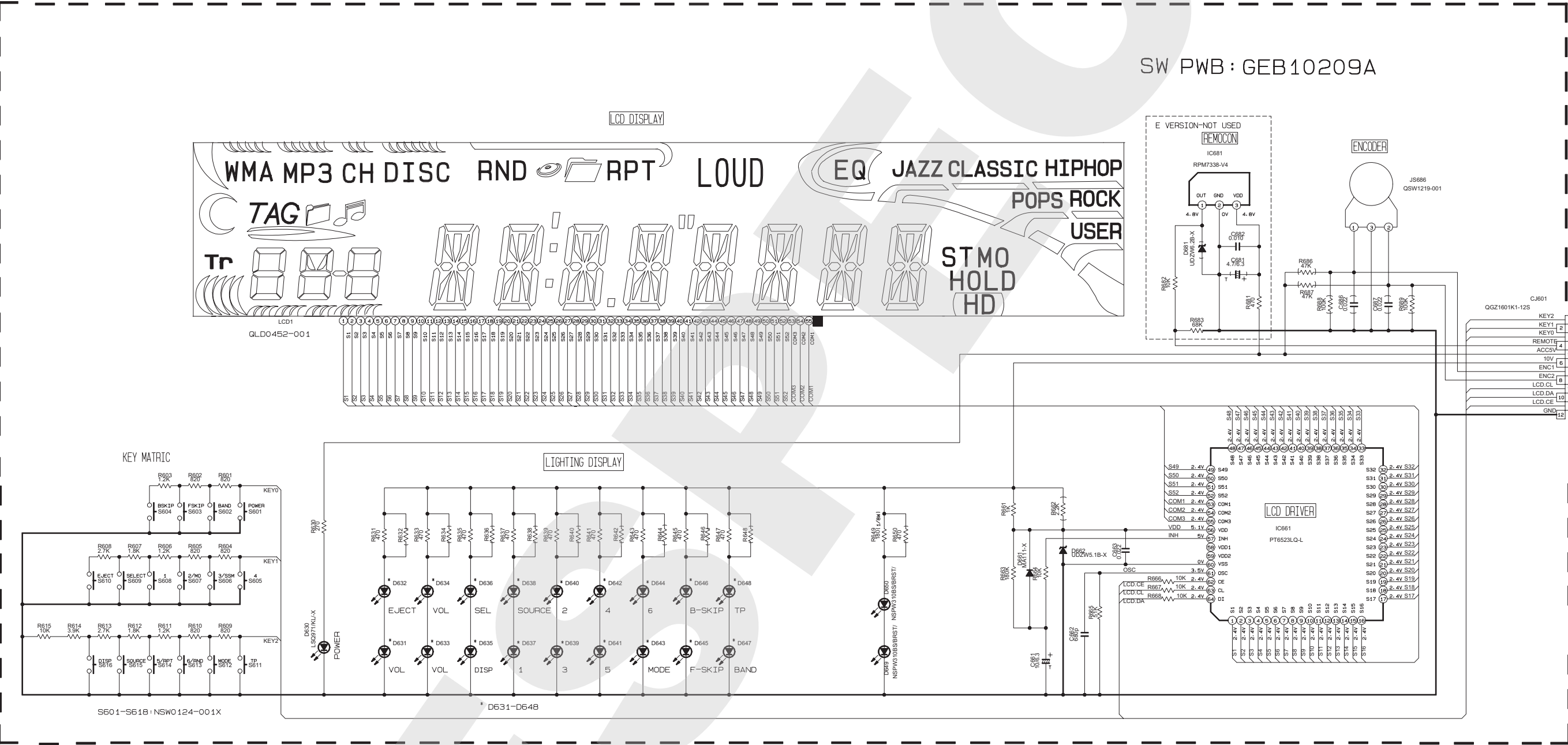


1. VOLTAGE ARE DC-MEASURED WITH A DIGITAL
VOLTMETER WITHOUT INPUT SIGNAL CONDITION
--- CD MODE.

ALL RESISTOR ARE $1/16W \pm 5\%$ METAL GLAZE RESISTOR.
ALL CAPACITOR ARE 50V OR 25V CERAMIC CAPACITOR.
ALL RESISTANCE VALUES ARE IN OHM
ALL CAPACITANCE VALUES ARE IN μF (PPF)

 ⚠ Parts are safety assurance parts. When replacing those parts make sure to use the specified one.

■ LCD and Key control section
(for KD-G331,KD-G332,KD-G333,KD-G337)

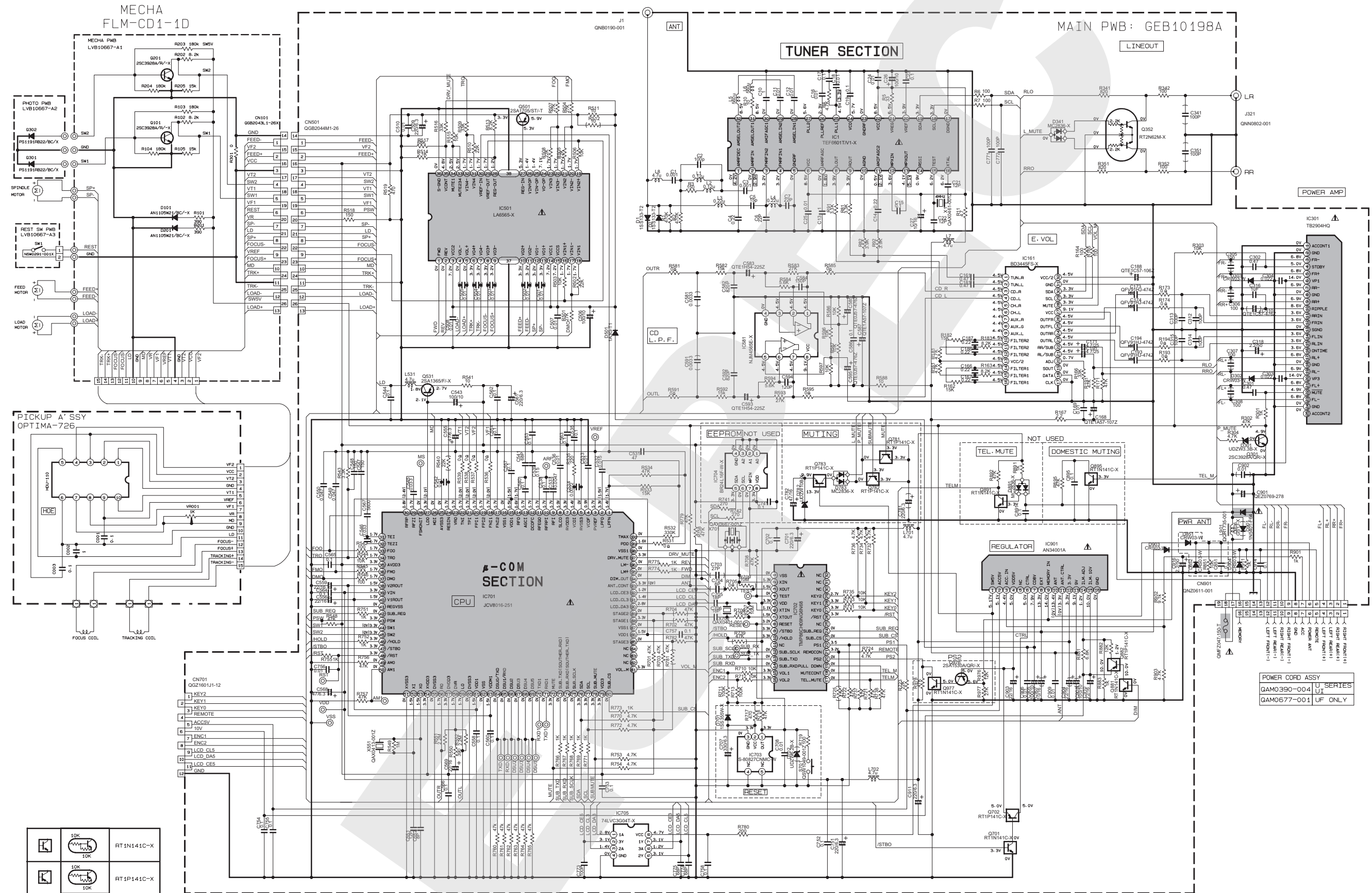


*REMARKS:

REF. NAME	MODEL	KD-G331ED	KD-G332/3ED	KD-G337BEED	KD-G337SEED
D631-D648		LNJ308G81/1-3/XLED	LSQ971/KL/-X	LSQ971/KL/-X	LNJ308G81/1-3/XLED

- NOTES
- VOLTAGES ARE DC-MEASURED WITH A DIGITAL VOLT METER WITHOUT INPUT SIGNAL.
 - UNLESS OTHERWISE SPECIFIED.
ALL RESISTORS ARE 1/16W 15% METAL GLAZE RESISTOR.
ALL CAPACITORS ARE 50V OR 25V CERAMIC CAPACITOR.
ALL RESISTANCE VALUES ARE IN OHM.
ALL CAPACITANCE VALUES ARE IN uF(P=pF)
ALL E. CAPACITORS ARE SHOWN IN THE FORM OF CAPACITANCE(uF)/RATED VOLTAGE(V)
T --- TANTALUM CAPACITOR.
 - COMPONENTS IN () INDICATE NOT USE.

■ Main section (for KD-G334,KD-G335,KD-G338)



NOTES:

- VOLTAGE ARE DC-MEASURED WITH A DIGITAL VOLT-METER WITHOUT INPUT SIGNAL CONDITION.
- UNLESS OTHERWISE SPECIFIED, ALL RESISTOR ARE 1/16W ±5% METAL GLAZE RESISTOR. ALL CAPACITOR ARE 50V OR 25V CERAMIC CAPACITOR. ALL CAPACITANCE VALUES ARE IN UF (μF).

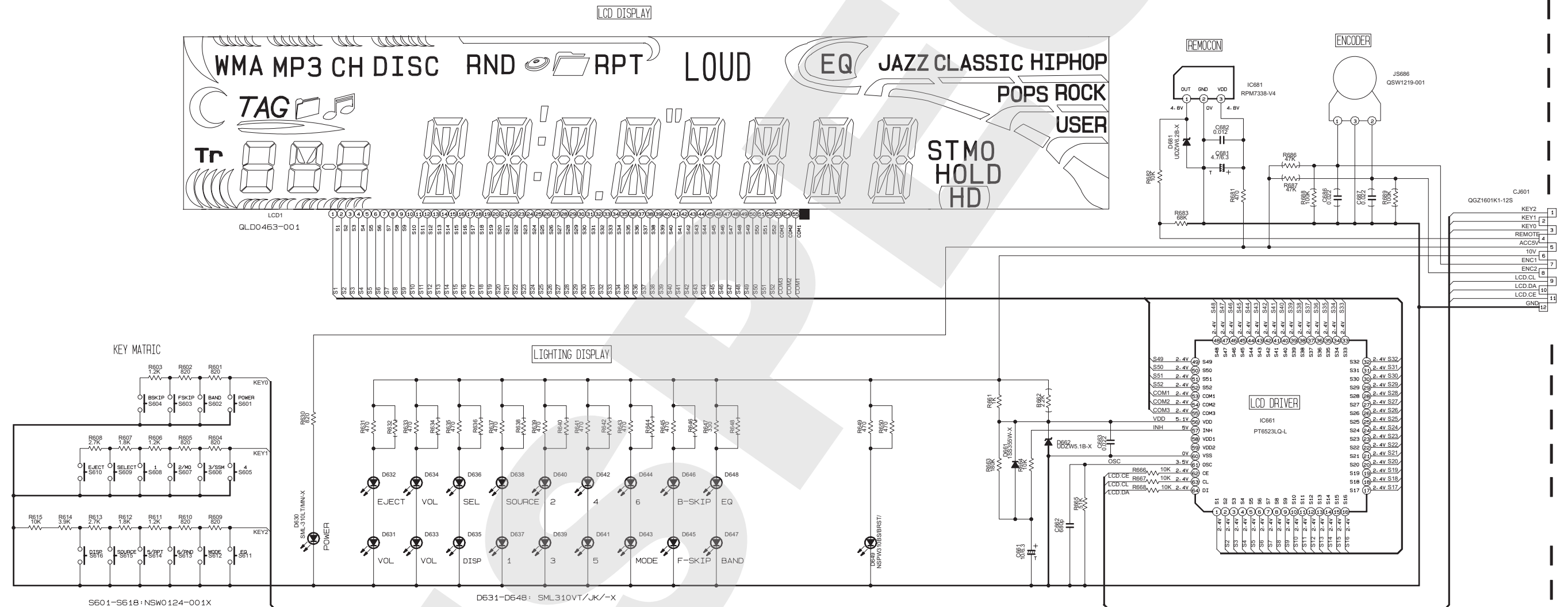
---FM---AM MODE. () CD MODE

ALL CAPACITORS ARE SHOWN IN THE FORM OF CAPACITANCE(UF)/RATED VOLTAGE(V)

⚠ Parts are safety assurance parts.
When replacing those parts make sure to use the specified one.

■ LCD and Key control section (for KD-G334,KD-G335,KD-G338)

SW PWB: GEB10209A



NOTES

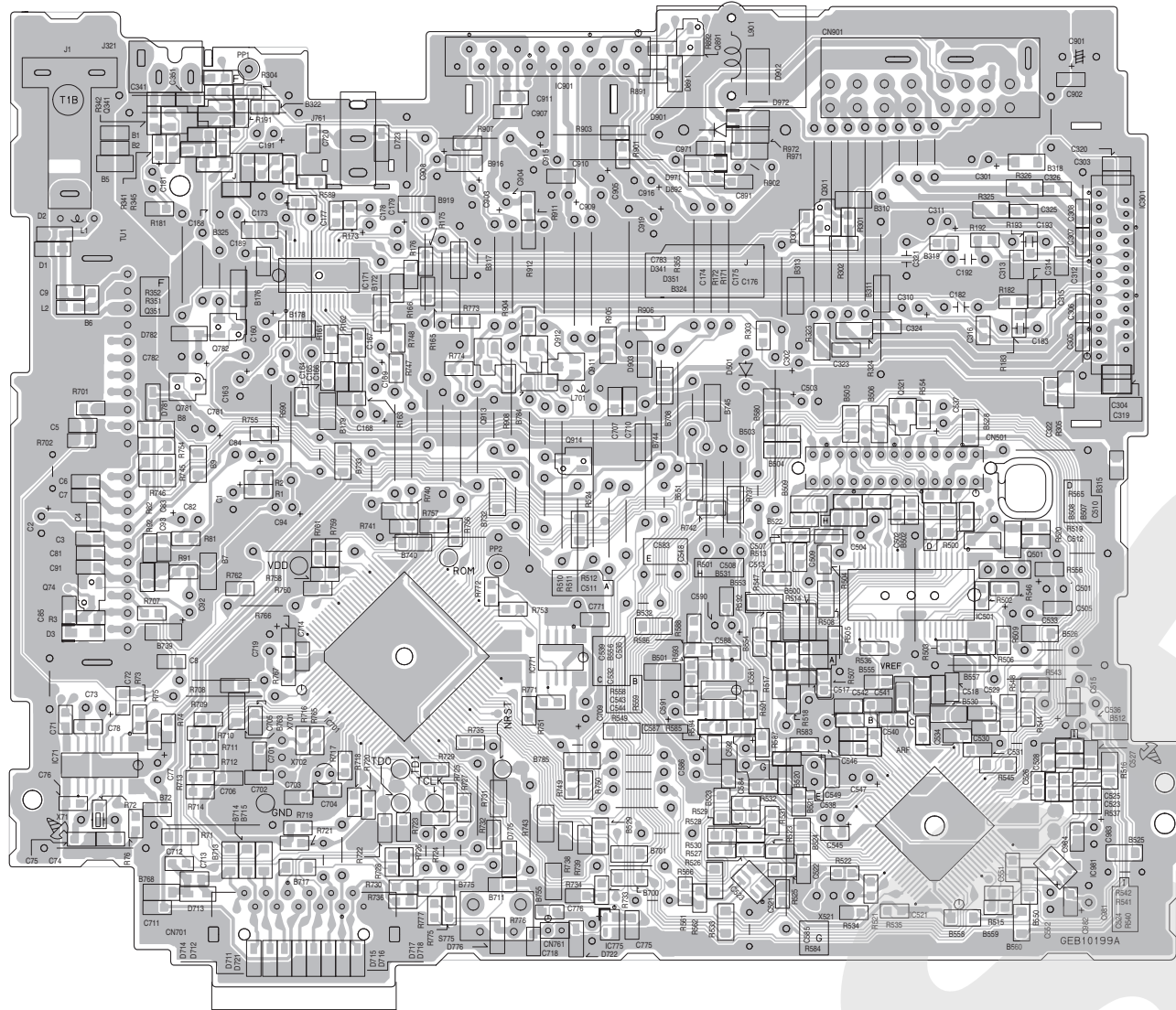
1. VOLTAGES ARE DC-MEASURED WITH A DIGITAL VOLT METER WITHOUT INPUT SIGNAL.
2. UNLESS OTHERWISE SPECIFIED.
ALL RESISTORS ARE 1/16W $\pm 5\%$ METAL GLAZE RESISTOR.
ALL CAPACITORS ARE 50V OR 25V CERAMIC CAPACITOR.
ALL RESISTANCE VALUES ARE IN OHM.
ALL CAPACITANCE VALUES ARE IN μF (P=PF)
ALL E-CAPACITORS ARE SHOWN IN THE FORM OF CAPACITANCE(μF)/RATED VOLTAGE(V)
T --- TANTALUM CAPACITOR.
3. COMPONENTS IN () INDICATE NOT USE.

Printed circuit boards

■ Main board

Lead free solder used in the board (material : Sn-Ag-Cu, melting point : 219 Centigrade)

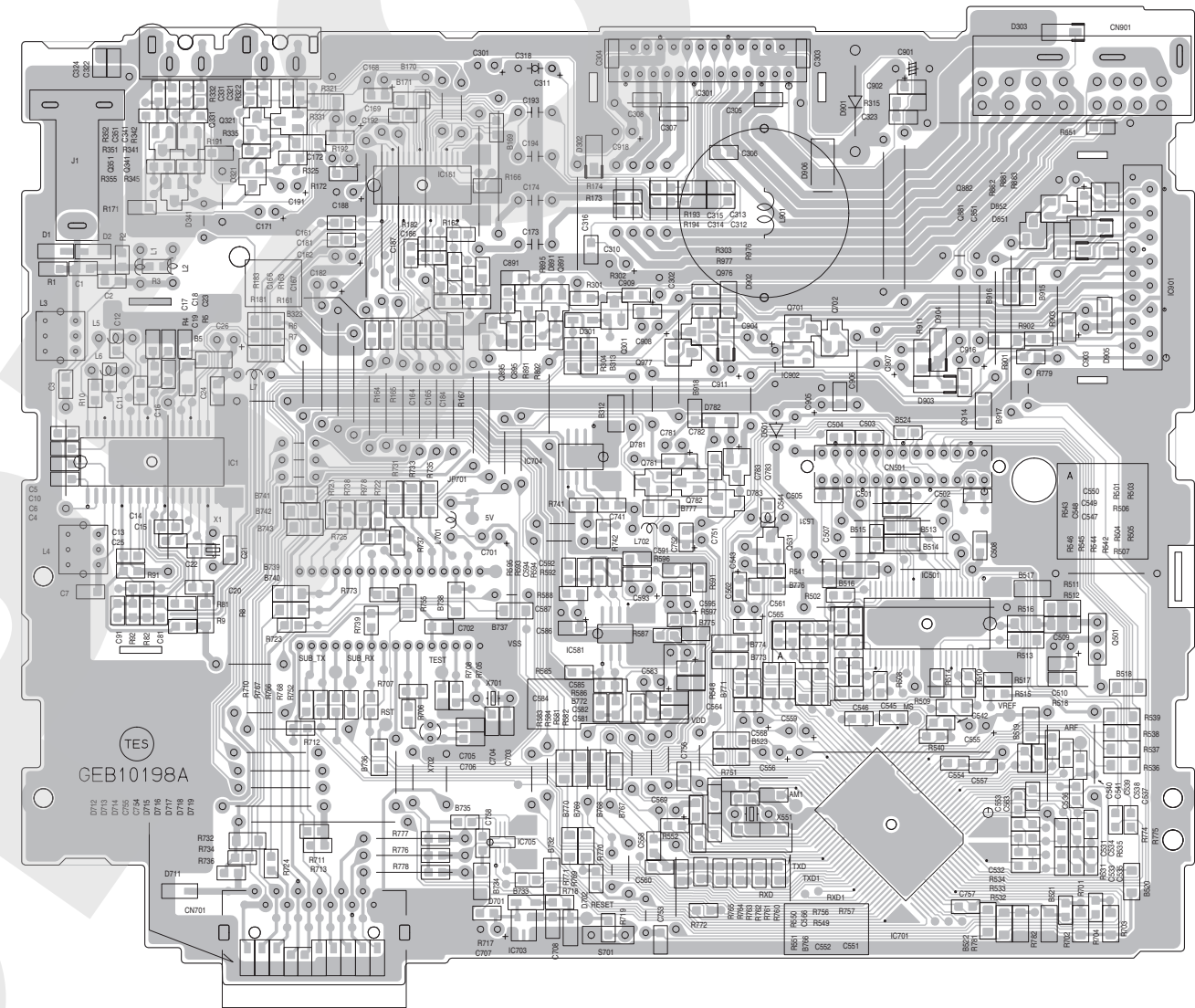
(for KD-G331,KD-G332,KD-G333,KD-G337)



■ Main board

Lead free solder used in the board (material : Sn-Ag-Cu, melting point : 219 Centigrade)

(for KD-G334,KD-G335,KD-G338)

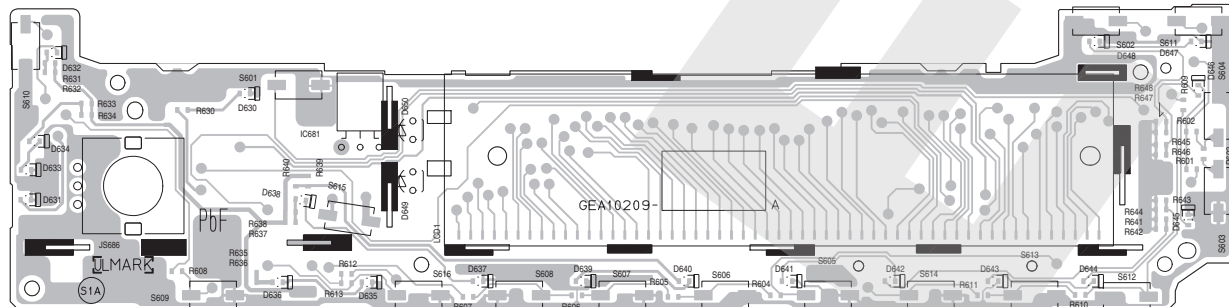


■ **Switch board**

Lead free solder used in the board (material : Sn-Ag-Cu, melting point : 219 Centigrade)

(Common)

forward side



reverse side

